

Student Perceptions of Food Animal Agricultural Issues Before and After Interactive Discussions on Challenging Topics.

Daniel H. Poole and Jeannette A. Moore, North Carolina State University, Raleigh.

A new lab called **Contemporary Issues** was created for the ANS 151 (Intro to Animal Science) labs. Was it effective? We wanted to know.

Prior to class, 50 students in the Intro to Animal Science labs read two papers outlining challenges related to food production that are associated with the world's steadily increasing human population.

50 years for the world population will require 100% more food, and 70% of this food must come from efficiency improving technology.

Access to safe, proven, efficiency-enhancing technologies ensures:

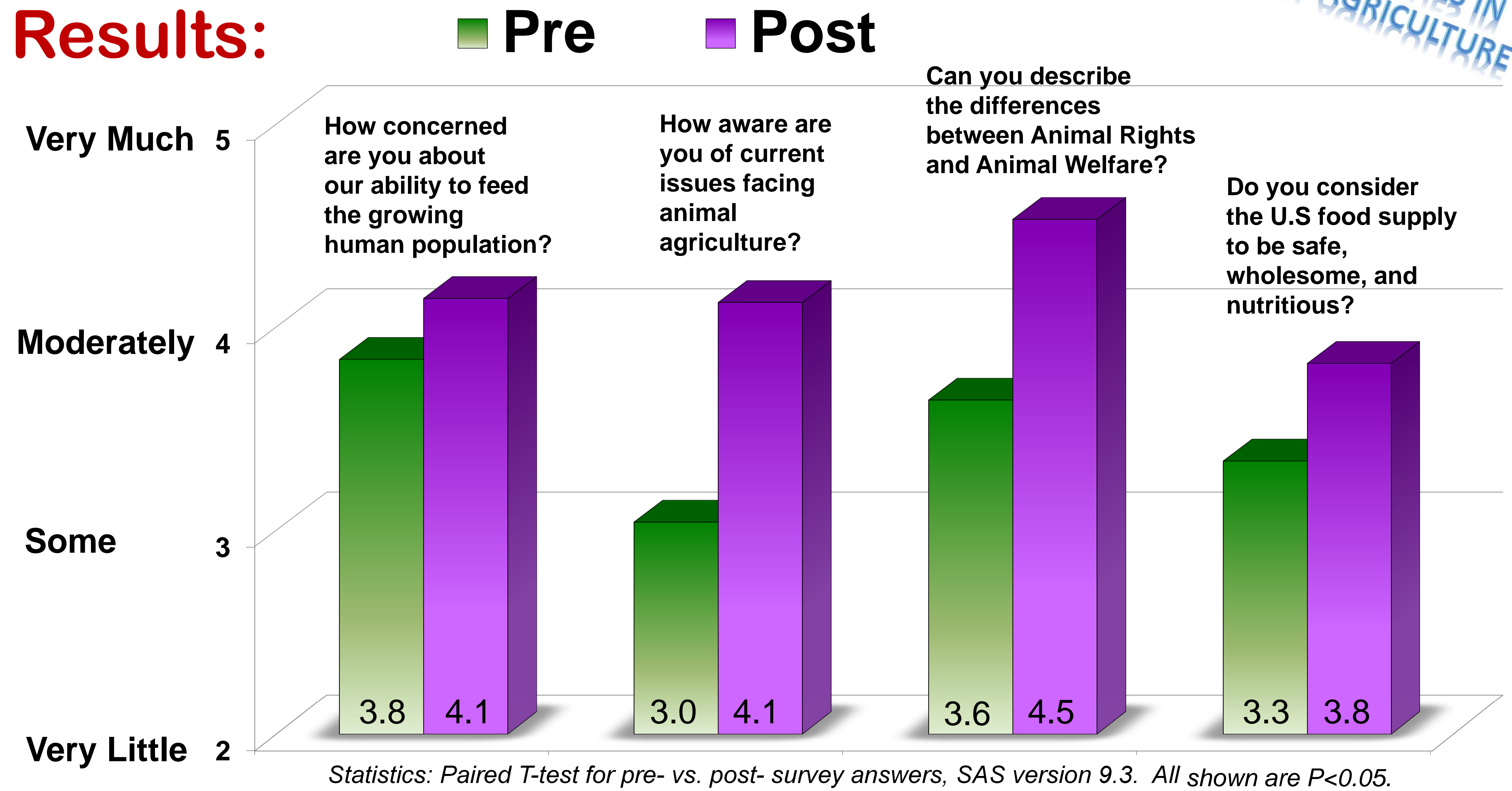
THE THREE RIGHTS

- FOOD** a basic human right
- CHOICE** a consumer right
- SUSTAINABILITY** environmentally right

Students read about Food Economics prior to coming to lab

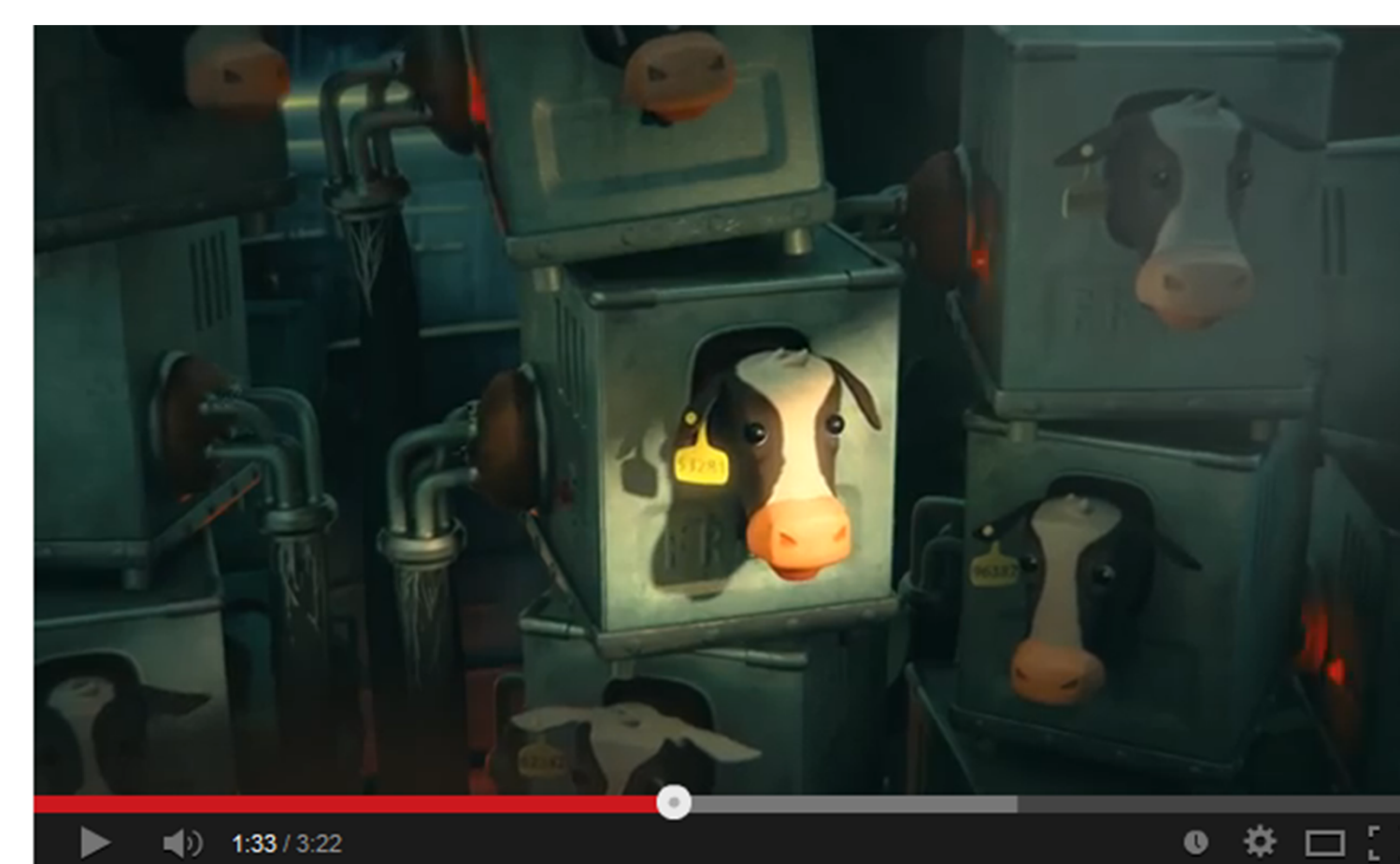
FOOD ANIMAL WELFARE
CURRENT ISSUES IN ANIMAL AGRICULTURE
PRODUCTION

Results:



- Contemporary Issue Lab - Pre-Lab Survey
- Instructions: Please circle the description the best fits your current understanding of the following questions.
- How concerned are you about our ability to feed the growing human population?
Not at all Very little Some Moderately Very Much
 - How aware are you of the current issues facing animal agriculture?
Not at all Very little Some Moderately Very Much
 - Can you describe the difference between animal rights and animal welfare?
Not at all Very little Some Moderately Very Much
 - Do you consider the U.S food supply to be safe, wholesome and nutritious?
Not at all Very little Some Moderately Very Much
 - Do you feel you can clearly identify a situation of poor animal husbandry from a photograph?
Not at all Very little Some Moderately Very Much
 - Do you feel animal agriculture negatively impacts the environment?
Not at all Very little Some Moderately Very Much
 - Do you agree with the following statement "animal producers over use antibiotics to make their animals grow faster"
Not at all Very little Some Moderately Very Much
 - Do you agree with the following statement "hormones in milk and meat cause girl to enter puberty earlier"
Not at all Very little Some Moderately Very Much
 - Do you use social media (ex. Facebook, Twitter, Myspace)?
Not at all Very little Some Moderately Very Much
 - Do you use social media to share agricultural related topics?
Not at all Very little Some Moderately Very Much

Pre- and Post- discussion surveys were administered

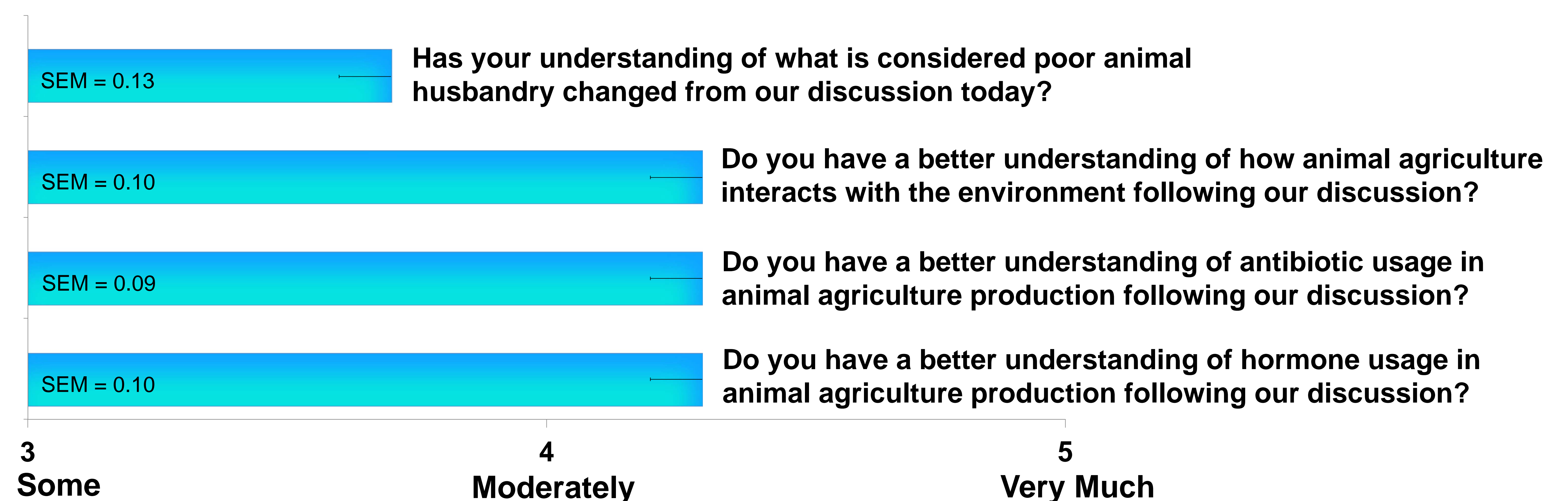


Activities included watching "The Scarecrow" video that shows dairy cows locked up in skyscrapers, chickens being injected, and more.

Students worked in small groups to discuss topics

Groups summarized their thoughts and presented them to the class for discussion

End of Class Survey:



Conclusion:

The new lab was successful in stimulating student understanding of important issues facing animal agriculture and will be continued in future years. More information on quality of animal husbandry and its definition will be provided to students.