



Engaging US College Students in Eco-Village Design for Disadvantaged Youth in Kenya

NACTA Conference
State College, PA June 2010

Children & Youth Empowerment Centre

- Street children in Kenya
- Established to address three gaps:
 - Standards of service provision
 - Program sustainability (especially in food provision)
 - Challenge of program exit
- Public-private initiative

CYEC Location



Stages of care



Intake

(Drop-in Center)

Primary

Care

(CYEC)

Program

Exit

(Zawadi Village)

Housing

Education (community or on-site)

Health care

Zawadi Village Objectives

- Exit avenue for former street-dwelling youth
- Economically self-sustaining
 - Agricultural production and processing
 - Tourism and entrepreneurial activities
- Healthy youth development
- Education and outreach
 - Appropriate technologies
 - Agricultural systems
 - Entrepreneurship
 - Model of land use and community planning

Experiential Service Learning

- Service-learning stimulates students' curiosity and motivation to learn (Furco, 1996)
- Service-learning provides opportunities to apply and integrate – enhances learning (Bransford, 1993; Eyler & Giles, 1999)
- Higher levels of engagement and curiosity lead to greater learning and retention (Eyler & Giles, 1999)
- Also enhances higher-level thinking skills – analysis and critical thinking

Agricultural Systems in East Africa

- Cross-listed in Agronomy and Community, Environment & Development
- Team-taught by Ag Economist & Soil Scientist, w/ support from Rural Soc, Ag & Extension Ed and Ag Engineering
- Students researched socio-economic & agro-ecological conditions
- They also researched possible options for development (ag production & processing)
- Collected curricular materials

Three Weeks in Kenya

- Meetings w/ international and domestic research institutes; Jomo Kenyatta University of Agriculture & Technology
- Community assessment
 - Ag production
 - Soil & water analysis
 - Mapping
- CYEC ag curriculum
- Blog:
<http://ecovillagelamura.weebly.com/index.html>

Lamuria Zawadi Eco-Village



Site of initial eco-village

Semi-arid agricultural zone, Rift Valley

Focusing on water harvesting & management

Lamuria

- Water is over-riding issue
- Semi-arid
 - Ave. annual precipitation 600mm (23.6")
 - Bi-modal rains
- Subsistence ag (some marketing)
- Maize, beans, wheat, potatoes, cabbage, onions, tomatoes, peas
- Only 10% has access to irrigated lands
- Potential for eco-tourism

2009 Focus group



Zawadi Eco-Village Land



Accomplishments

- Prioritizing Development Options
 - Initiating activities in Lamuria
 - 3 youth training in beekeeping
- Compiled Agricultural Curriculum for training and application at the CYEC
 - Vocational skills program
 - ‘Nature Club’

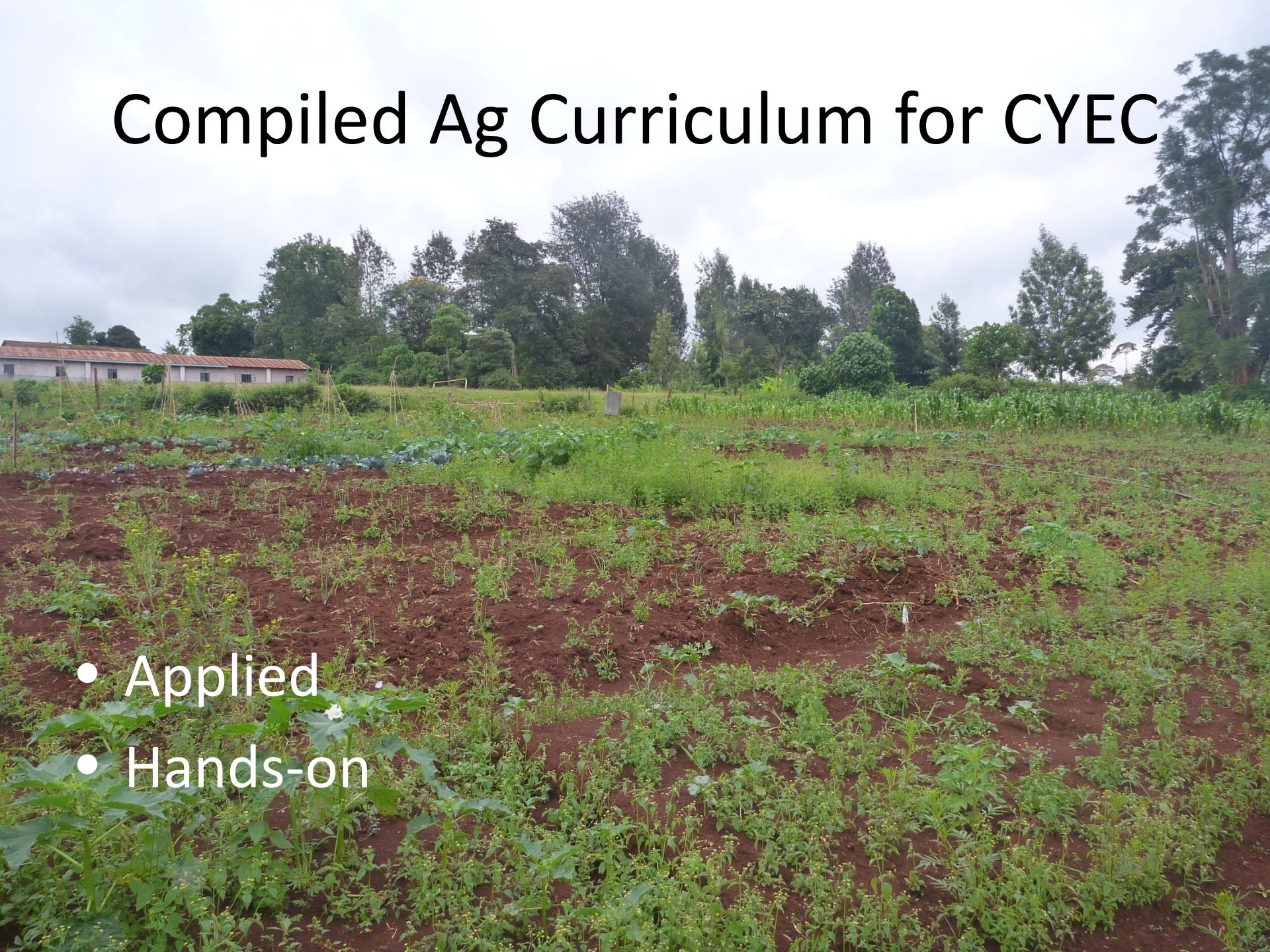
Prioritizing Development Options

- Beekeeping
- Rabbits (at CYEC)
- Aloe
- Hay
- Castor
- Indigenous vegetables
- Horticultural products
- Eco-tourism



Compiled Ag Curriculum for CYEC

- Applied
- Hands-on



Student Outcomes

- Greater awareness of complexity of food security
- Application of knowledge learned in other courses
- Depended on multidisciplinary expertise
- Enhanced research skills
- Greater interest in international issues
- Cultural immersion

PSU Benefits

- Integrative experience – multidisciplinary, service learning and global awareness
- Integrates teaching, research and outreach
- CYEC is an excellent partner institution

