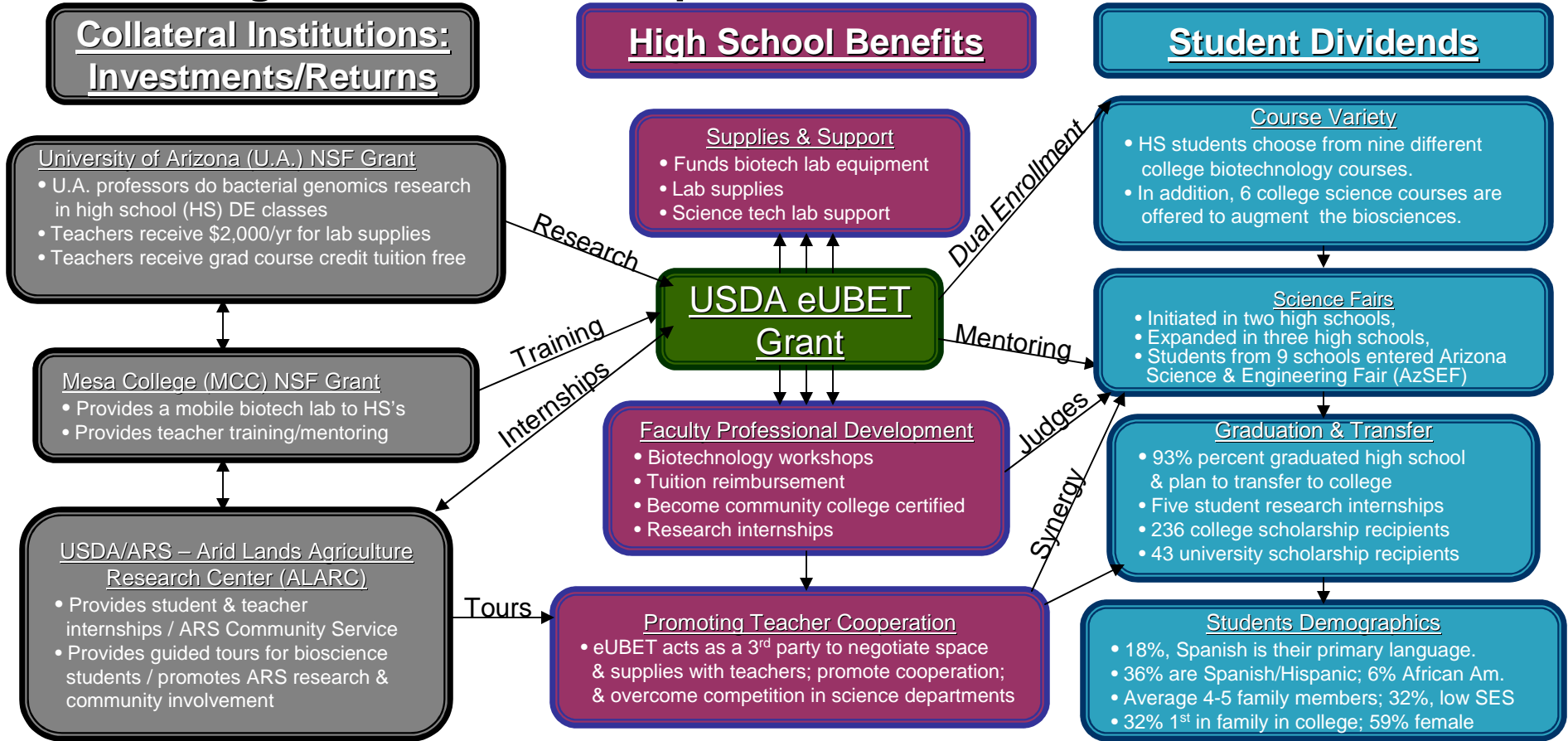


Building Connections to Expand Arizona's Bioscience Education



SOUTH MOUNTAIN COMMUNITY COLLEGE

Survey Results Indicate:

- Teachers and Students value: Labs/lab technicians, lab equipment, dual enrollment.
- Barriers to Bioscience growth: Local school budgets, HS scheduling, lab availability

Future Considerations

Construct a science & engineering academy (grades 7-12) on a HS campus; Jointly operated by HS, college, university, & ALARC

USDA United States Department of Agriculture National Institute of Food and Agriculture



Co-PD: Marshall Logvin
eUBET Lab Tech: Antonio Garcia