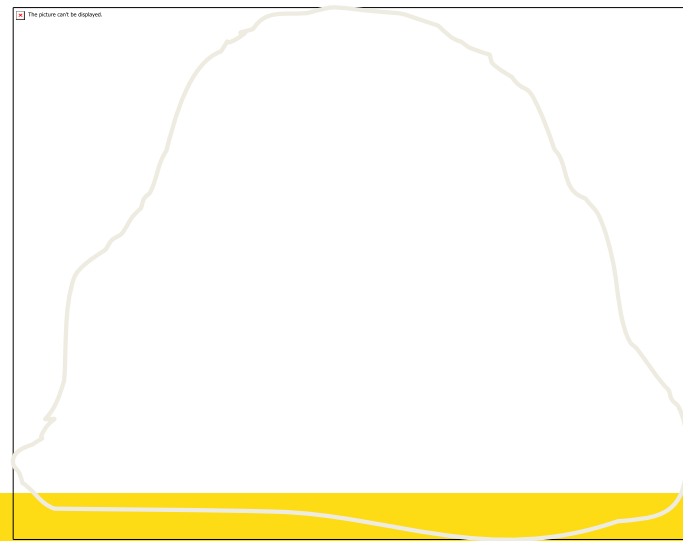


Rebecca C. Bott-Knutson, Erin L. Cortus, Todd P. Trooien

The picture can't be displayed.

The picture can't be displayed.





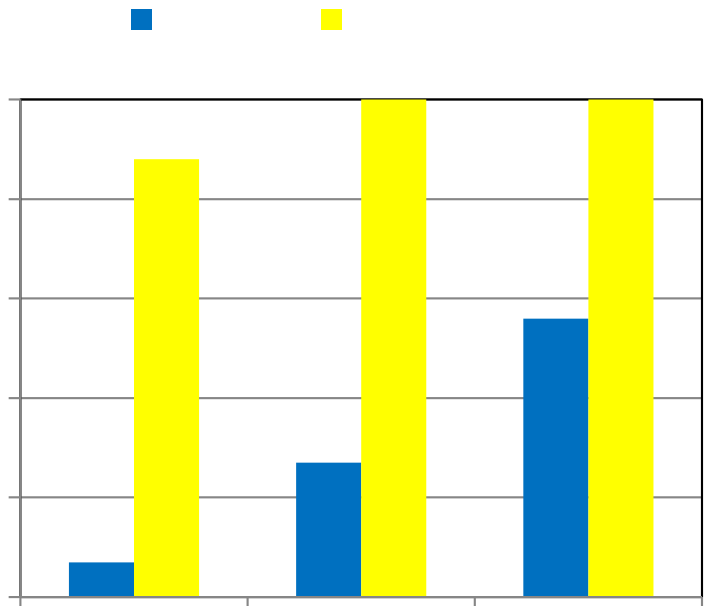
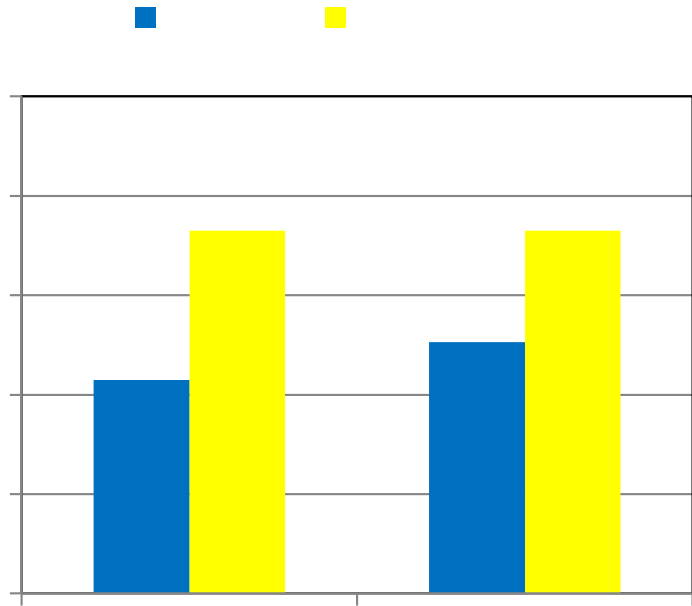
(Bott and Cortus, 2014)



	Stable Management	Agricultural Waste Management	
Program	Animal Science	Agricultural Systems Technology (AST) Program	
Opt/Mandatory	One of three technical elective options for an equine minor.	Required course for the AST major. Optional for graduate students.	
Class ID	SM	AWM1	AWM2
Number of Students	26	25	29
Undergraduate/ Graduate	26/0	23/2	26/3
Males/Females	2/24	24/1	28/1
Activity Period	October – December 2012	February – April 2013	March – April 2014







The picture can't be displayed.





	Pre-test	Post-Test
Optimum temperature	7%	88%*
Optimum moisture	27%	100%*
Manure produced	56%	100%*

*(P<0.01)



Course:

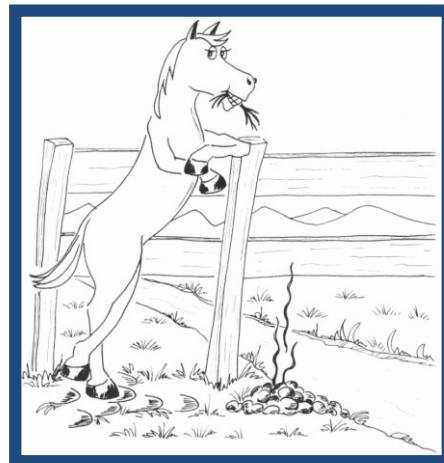
Prerequisites:

Objective:

Frequency:

The picture can't be displayed.

The picture can't be displayed.



The picture can't be displayed.

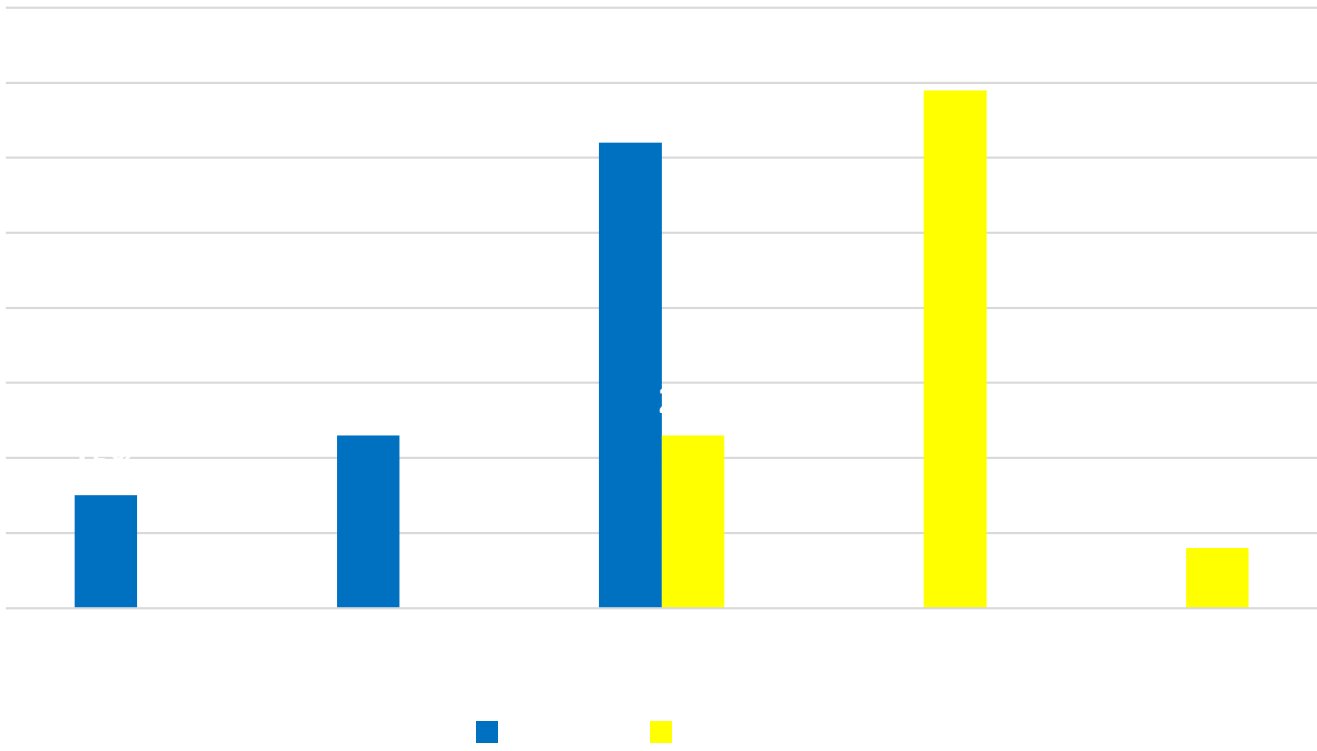
The picture can't be displayed.



The picture can't be displayed.

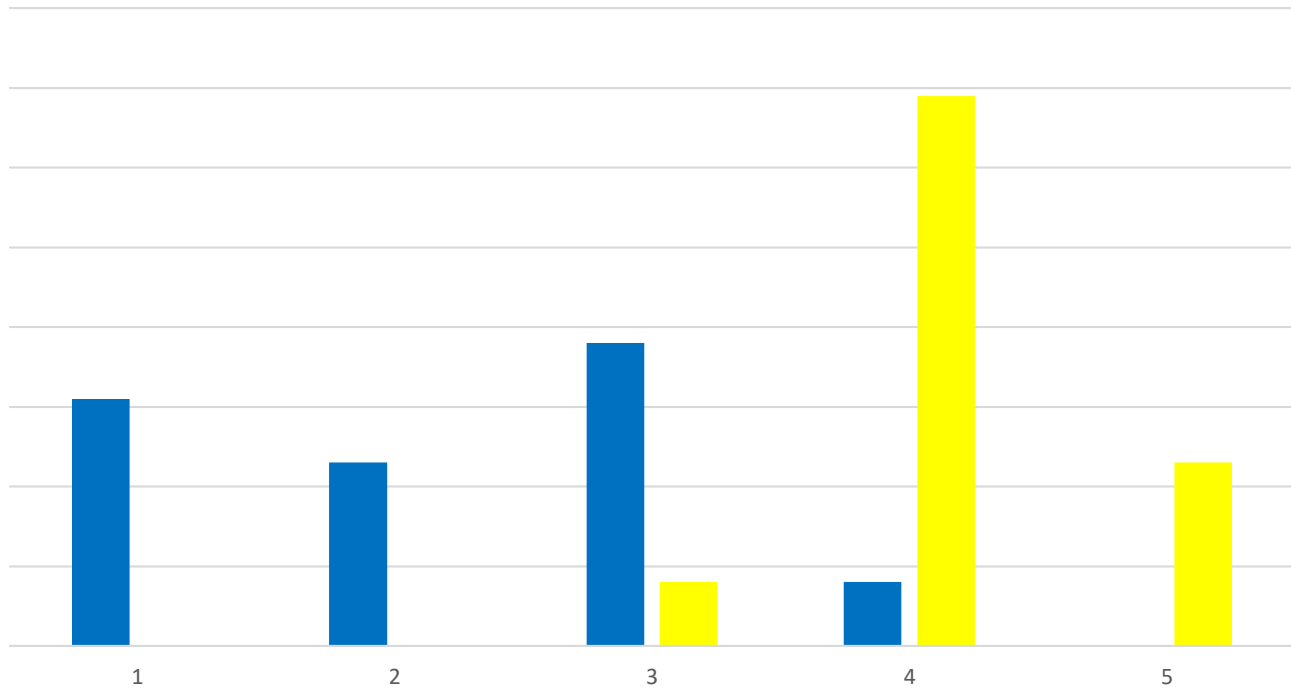
The picture can't be displayed.

Topical-based knowledge

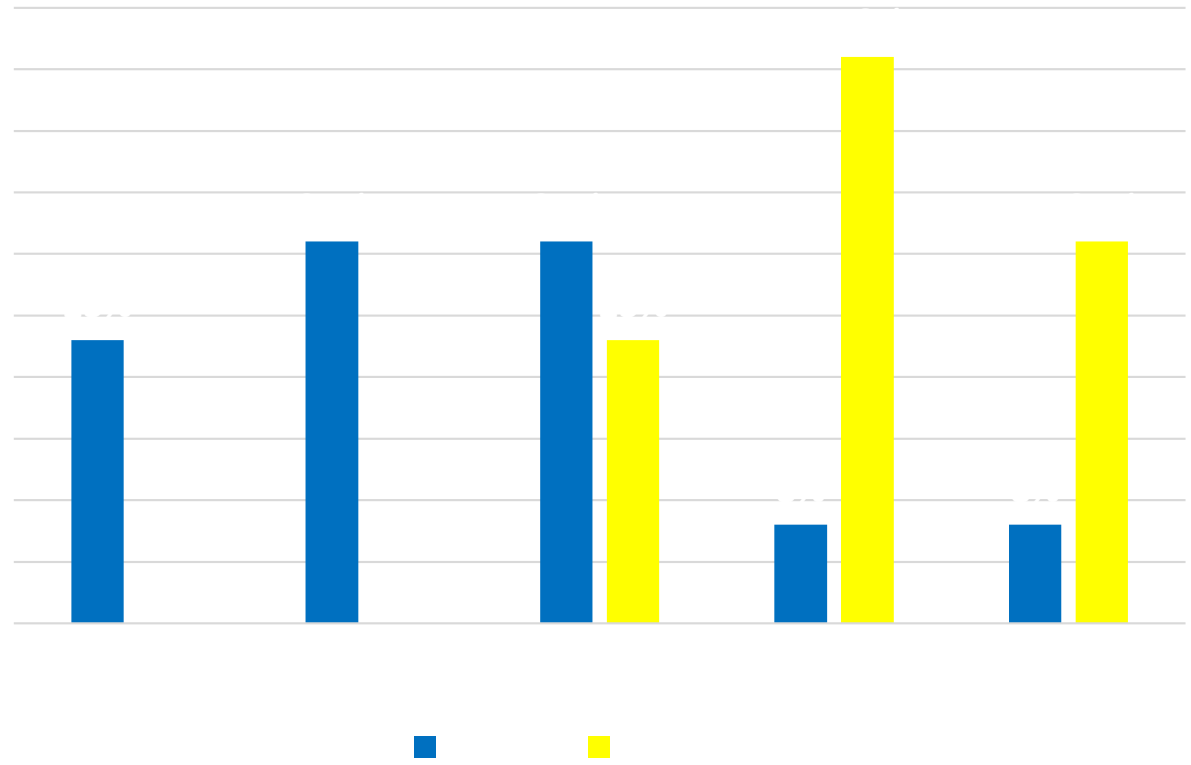


The picture can't be displayed.

Topical-based knowledge

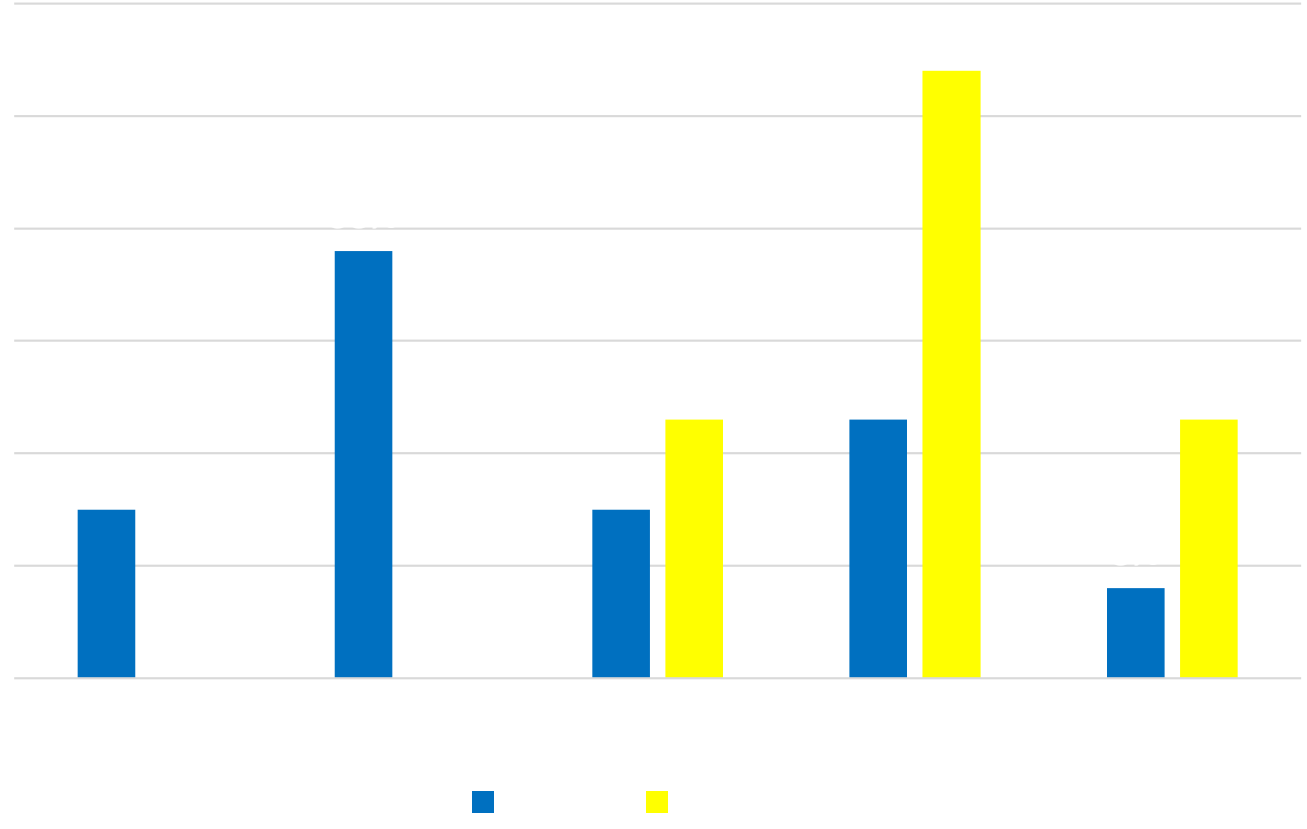


Topical-based knowledge



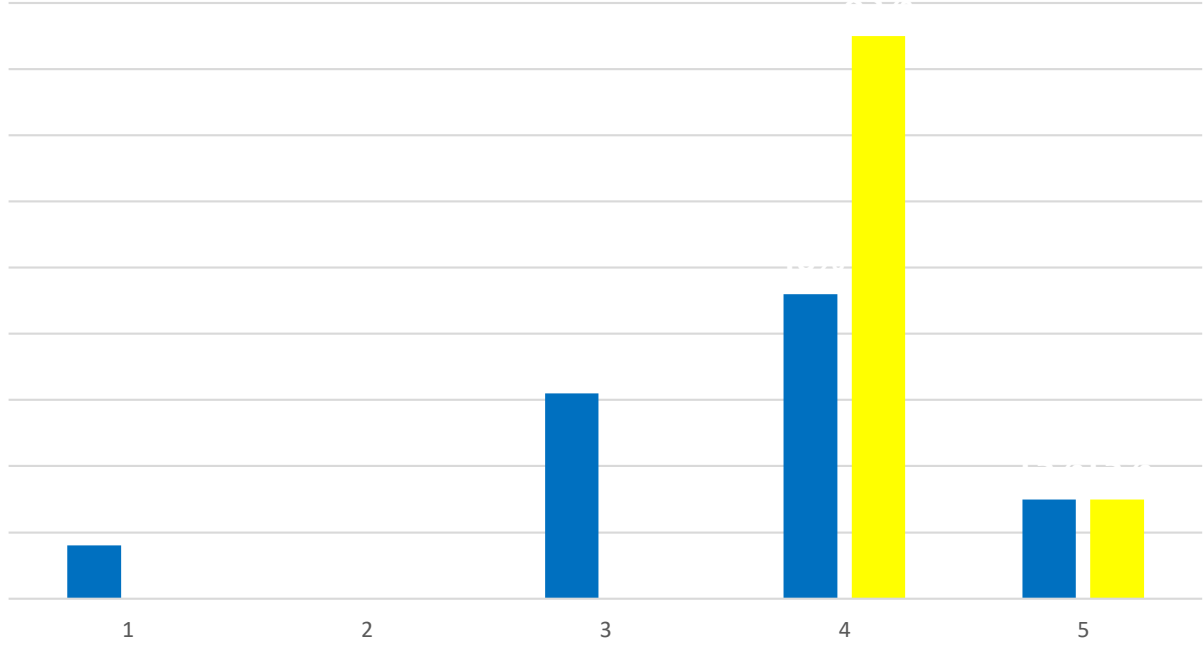
The picture can't be displayed.

Process-based knowledge



The picture can't be displayed.

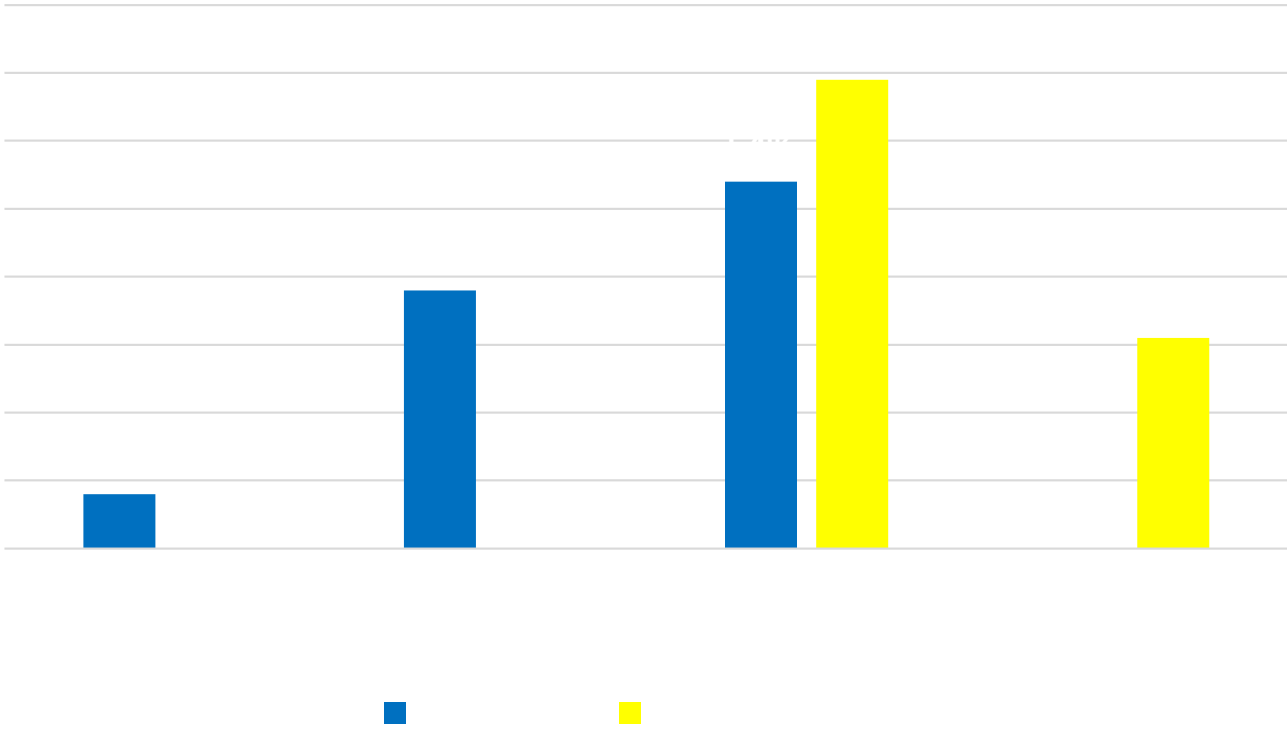
Process-based knowledge



The picture can't be displayed.



Process-based knowledge



The picture can't be displayed.

The picture can't be displayed.

The picture can't be displayed.

The picture can't be displayed.

The picture can't be displayed.